

SteriTrays

"A Brand of Yarsons Group"

UnLeashing The Quality

Sterilization Trays Company



50

1965 Golden Jubilee Celebrations 2015

www.steritrays.com



SteriTrays

Since 1965 Yarsons International is manufacturing and supplying international market with surgical instruments, medical sterilizing trays and related equipments.

Now we are introducing SteriTrays as a Brand of Yarsons International For Sterilization trays.

We are still growing to mark & design new special products of sterilization trays and baskets.

By penetrating the marketplace with unique and durable trays, we are honored to recognized as an Innovative leader in sterilization field.

Expanding our business to Europe, Far East and USA, our aim to establish long lasting customers



Suite 12, Bunkilla Plaza,
Bracetown Business Park,
Clonee, Dudlin 15,
D15XC64, Republic of Ireland.

Tel: + 353 1 806 8600
Direct: + 353 1 834 4340
Email: info@tpwhelehan.ie
Web: www.whelehansurgical.ie

For Ordering, please contact:

Uniphar Hospital Services,
4045 Kingswood Road,
Citywest Business Park, Dublin 24.
E-Mail: Unipharhospitalervices@uniphar.ie

Tel: + 353 1 468 8456
Fax: + 353 1 466 0782

Customization

Key to Success & Satisfaction

Mesh Trays

- 1
- 2
- 3
- 4
- 5
- 6

trays@steritrays.com

Cassette Trays

- 1
- 2
- 3
- 4
- 5
- 6

www.steritrays.com



6 Steps

Make your own Tray



Green Environment



Customized Solutions are Welcome



Corporate Social Responsibility



Continuous improvement of QMS



www.steritrays.com





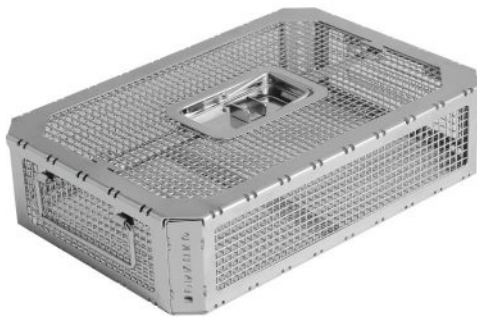
New Arrival

Universal trays
 Suitable for Surgical sets,
 Ortho sets etc...

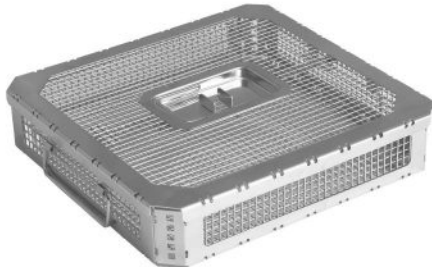
Sterilization Trays



| Model | Dimension(mm) |
|----------|-----------------|
| SOT-2070 | 480 x 250 x 70 |
| SOT-2100 | 480 x 250 x 100 |
| SOT-2120 | 480 x 250 x 120 |



| Model | Dimension(mm) |
|----------|-----------------|
| SOT-3070 | 400 x 250 x 70 |
| SOT-3100 | 400 x 250 x 100 |
| SOT-3120 | 400 x 250 x 120 |
| SOT-6070 | 300 x 200 x 70 |
| SOT-6100 | 300 x 200 x 100 |
| SOT-6120 | 300 x 200 x 120 |



| Model | Dimension(mm) |
|----------|-----------------|
| SOT-4050 | 250 x 240 x 50 |
| SOT-4070 | 250 x 240 x 70 |
| SOT-4100 | 250 x 240 x 100 |

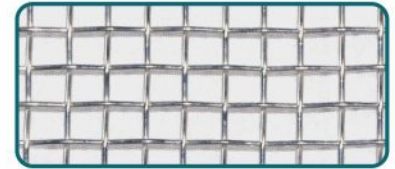


| Model | Dimension(mm) |
|----------|----------------|
| SMT-7040 | 300 x 200 x 40 |
| SMT-7050 | 300 x 200 x 50 |
| SMT-8040 | 400 x 250 x 40 |
| SMT-8050 | 400 x 250 x 50 |
| SMT-8070 | 400 x 250 x 70 |



| Model | Dimension(mm) |
|----------|----------------|
| SPT-7040 | 300 x 200 x 40 |
| SPT-7050 | 300 x 200 x 50 |
| SPT-8040 | 400 x 250 x 40 |
| SPT-8050 | 400 x 250 x 50 |
| SPT-8070 | 400 x 250 x 70 |

Mesh Type : Woven
5 x 5 x 1.0 mm
Material : 304(ASTM)



Wire Mesh Trays



| Model | Dimension(mm) |
|----------|-----------------|
| SWD-1050 | 540 x 255 x 50 |
| SWD-1070 | 540 x 255 x 70 |
| SWD-1100 | 540 x 255 x 100 |
| SWD-2050 | 485 x 255 x 50 |
| SWD-2070 | 485 x 255 x 70 |
| SWD-2100 | 485 x 255 x 100 |



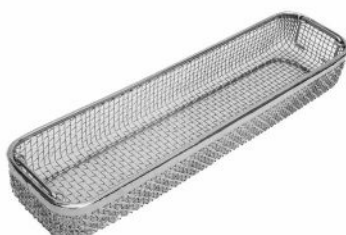
| Model | Dimension(mm) |
|----------|-----------------|
| SWD-3050 | 405 x 255 x 50 |
| SWD-3070 | 405 x 255 x 70 |
| SWD-3100 | 405 x 255 x 100 |



| Model | Dimension(mm) |
|----------|-----------------|
| SWD-4050 | 255 x 245 x 50 |
| SWD-4070 | 255 x 245 x 70 |
| SWD-4100 | 255 x 245 x 100 |

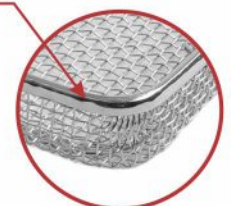


| Model | Dimension(mm) |
|----------|----------------|
| YWD-5050 | 255 x 120 x 50 |
| YWD-5070 | 255 x 120 x 70 |

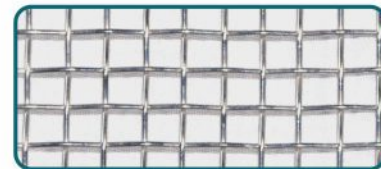


| Model | Dimension(mm) |
|----------|-----------------|
| YWD-8500 | 500 x 150 x 100 |
| YWD-8950 | 850 x 200 x 100 |
| YWD-9102 | 355 x 100 x 90 |
| YWD-9200 | 440 x 110 x 45 |
| YWD-9210 | 440 x 110 x 65 |

Special Protection Metal Strip



Mesh Type : Woven
5 x 5 x 1.0 mm
Material : 304(ASTM)



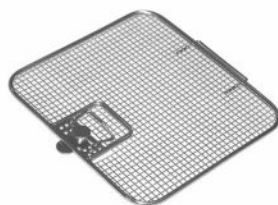
Wire Mesh Trays



| Model | Dimension(mm) |
|----------|-----------------|
| YWM-9002 | 355 x 100 x 90 |
| YWM-8900 | 410 x 260 x 110 |



| Model | Dimension(mm) |
|----------|----------------|
| YWM-8000 | 350 x 160 x 50 |
| YWM-8005 | 260 x 190 x 50 |
| YWM-8050 | 380 x 250 x 50 |
| YWM-8100 | 380 x 190 x 85 |



LIDs (optional)

| Model | Dimension(mm) |
|----------|---------------|
| YWM-9005 | 255 x 120 |
| YWM-9004 | 225 x 245 |
| YWM-9008 | 250 x 240 |



LIDs (optional)

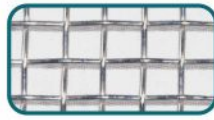
| Model | Dimension(mm) |
|----------|---------------|
| YWM-9001 | 540 x 255 |
| YWM-9002 | 485 x 255 |
| YWM-9003 | 405 x 255 |
| YWM-9006 | 480 x 370 |
| YWM-9007 | 480 x 250 |

Deep drawn stainless steel wire trays with stacking rim and electrolytically polished trays are equipped with collapsible grips

| Model | Dimension(mm) |
|----------|---------------|
| YWM-8501 | 540x250x50 |
| YWM-8930 | 560x375x70 |
| YWM-9000 | 480x250x50 |
| YWM-9010 | 480x250x70 |
| YWM-9020 | 480x250x100 |
| YWM-9003 | 480x300x50 |
| YWM-9030 | 480x250x60 |

| Model | Dimension(mm) |
|----------|---------------|
| YWM-9016 | 400x250x50 |
| YWM-9106 | 400x250x70 |
| YWM-9005 | 400x300x50 |
| YWM-9004 | 400x370x50 |
| YWM-9017 | 450x220x50 |
| YWM-9100 | 250x240x50 |
| YWM-9130 | 250x240x60 |

| Model | Dimension(mm) |
|----------|---------------|
| YWM-9110 | 250x240x70 |
| YWM-9107 | 250x190x50 |
| YWM-9103 | 300x250x50 |
| YWM-9522 | 750x200x50 |
| YWM-9600 | 650x650x30 |
| | |
| | |



Mesh Type : Woven
5 x 5 x 1.0 mm
Material : 304(ASTM)



Mesh Type : Spotted
5.5 x 5.5 x 1.2 mm
Material: 304(ASTM)



Perforation:
2.5mm x 22(swg)
304(ASTM) Type

Perforated / Mesh Trays

Round Corners



| Model | Dimension(mm) |
|-----------|-----------------|
| YRCM-1050 | 540 x 255 x 50 |
| YRCM-1070 | 540 x 255 x 70 |
| YRCM-1100 | 540 x 255 x 100 |
| YRCM-2050 | 485 x 255 x 50 |
| YRCM-2070 | 485 x 255 x 70 |
| YRCM-2100 | 485 x 255 x 100 |



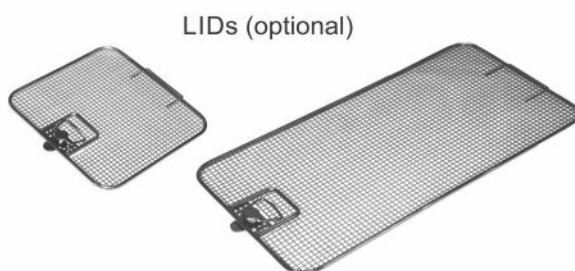
| Model | Dimension(mm) |
|-----------|-----------------|
| YRCM-3050 | 405 x 255 x 50 |
| YRCM-3070 | 405 x 255 x 70 |
| YRCM-3100 | 405 x 255 x 100 |



| Model | Dimension(mm) |
|-----------|-----------------|
| YRCM-4050 | 255 x 245 x 50 |
| YRCM-4070 | 255 x 245 x 70 |
| YRCM-4100 | 255 x 245 x 100 |

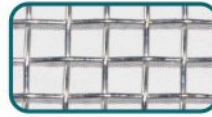


| Model | Dimension(mm) |
|-----------|----------------|
| YRCM-5050 | 255 x 120 x 50 |
| YRCM-5070 | 255 x 120 x 70 |

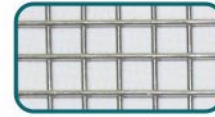


LIDs (optional)

| Model | Dimension(mm) |
|----------|---------------|
| YWD-9005 | 255 x 120 |
| YWD-9004 | 255 x 245 |
| YWM-9008 | 250 x 240 |
| YWD-9001 | 540 x 255 |
| YWD-9002 | 485 x 255 |
| YWD-9003 | 405 x 255 |
| YWM-9006 | 480 x 370 |
| YWM-9007 | 480 x 250 |



Mesh Type : Woven
5 x 5 x 1.2 mm
Material: 304(ASTM)



Mesh Type : Spotted
5.5 x 5.5 x 1.2 mm
Material: 304(ASTM)



Perforation:
2.5mm x 22(swg)
304(ASTM) Type

Perforated / Mesh Trays

Chamfer Corners



| Model | Dimension(mm) |
|-----------|-----------------|
| YCCM-1050 | 540 x 255 x 50 |
| YCCM-1070 | 540 x 255 x 70 |
| YCCM-1100 | 540 x 255 x 100 |
| YCCM-2050 | 485 x 255 x 50 |
| YCCM-2070 | 485 x 255 x 70 |
| YCCM-2100 | 485 x 255 x 100 |
| YCCM-6005 | 480 x 300 x 60 |
| YCCM-6010 | 480 x 250 x 60 |
| YCCM-6012 | 480 x 120 x 60 |



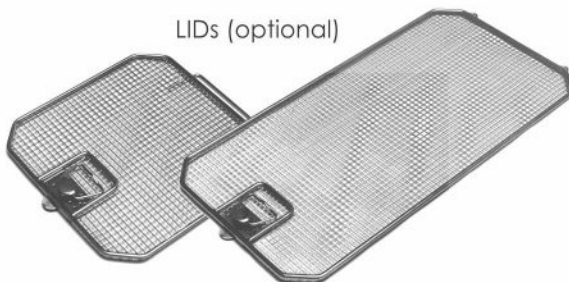
| Model | Dimension(mm) |
|-----------|-----------------|
| YCCM-3050 | 405 x 255 x 50 |
| YCCM-3070 | 405 x 255 x 70 |
| YCCM-3100 | 405 x 255 x 100 |



| Model | Dimension(mm) |
|-----------|-----------------|
| YCCM-4050 | 255 x 245 x 50 |
| YCCM-4070 | 255 x 245 x 70 |
| YCCM-4100 | 255 x 245 x 100 |
| YCCM-6001 | 300 x 240 x 60 |
| YCCM-6020 | 250 x 240 x 60 |



| Model | Dimension(mm) |
|-----------|----------------|
| YCCM-5050 | 255 x 120 x 50 |
| YCCM-6025 | 250 x 120 x 60 |
| YCCM-5070 | 255 x 120 x 70 |



LIDs (optional)

| Model | Dimension(mm) |
|----------|---------------|
| YLD-9005 | 255 x 120 |
| YLD-9004 | 255 x 245 |
| YLM-9008 | 250 x 240 |
| YLM-6001 | 300 x 240 |
| YLD-9001 | 540 x 255 |
| YLD-9002 | 485 x 255 |
| YLD-9003 | 405 x 255 |
| YLM-9006 | 480 x 370 |
| YLM-9007 | 480 x 250 |

Mesh Type : woven
 Mesh Size: 2 x 2 mm
 Mesh Wire: 0.71mm(22-swg)
 Material: 304(ASTM) Type



Micro Mesh Trays



| Model | Dimension(mm) |
|----------|---------------|
| YMM-5500 | 40 x 40 x 20 |
| YMM-5600 | 80 x 40 x 20 |



| Model | Dimension(mm) |
|----------|---------------|
| YMM-5650 | 160 x 40 x 20 |
| YMM-5655 | 200 x 40 x 40 |
| YMM-5656 | 200 x 60 x 40 |



| Model | Dimension(mm) |
|----------|---------------|
| YMM-5700 | 70 x 70 x 30 |
| YMM-5800 | 80 x 80 x 40 |
| YMM-5900 | 90 x 90 x 50 |
| YMM-5906 | 80 x 40 x 40 |



| Model | Dimension(mm) |
|----------|----------------|
| YMM-6010 | 150 x 110 x 20 |
| YMM-6020 | 180 x 130 x 20 |
| YMM-6030 | 210 x 170 x 20 |
| YMM-6035 | 230 x 150 x 50 |



| Model | Dimension(mm) |
|----------|----------------|
| YMM-7100 | 225 x 110 x 50 |
| YMM-7105 | 235 x 120 x 60 |
| YMM-7120 | 220 x 150 x 30 |
| YMM-7200 | 270 x 135 x 40 |
| YMM-7205 | 280 x 145 x 50 |

Mesh Type : woven
 Mesh Size: 2 x 2 mm
 Mesh Wire: 0.71mm(22-swg)
 Material: 304(ASTM) Type

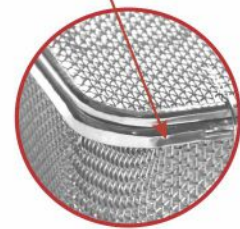


Micro Mesh Trays



| Model | Dimension(mm) |
|----------|----------------|
| YMM-6040 | 250 x 200 x 20 |
| YMM-6060 | 300 x 180 x 20 |
| YMM-7055 | 155 x 155 x 80 |

Special Protection Metal Strip



| Model | Dimension(mm) |
|----------|-----------------|
| YMM-9105 | 300 x 250 x 50 |
| YMM-9301 | 400 x 200 x 50 |
| YMM-6500 | 470 x 250 x 20 |
| YMM-7300 | 400 x 250 x 50 |
| YMM-8001 | 380 x 250 x 50 |
| YMM-8901 | 410 x 260 x 110 |
| YMM-6900 | 500 x 400 x 50 |



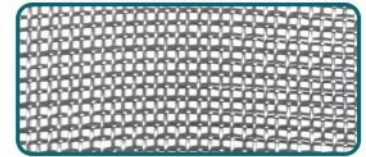
| Model | Dimension(mm) |
|----------|----------------|
| YMM-9101 | 250 x 240 x 50 |
| YMM-9104 | 300 x 250 x 50 |
| YMM-7000 | 200 x 110 x 40 |



| Model | Dimension(mm) |
|----------|----------------|
| YMM-8051 | 380 x 250 x 50 |
| YMM-9001 | 480 x 250 x 50 |
| YMM-9011 | 480 x 250 x 70 |
| YMM-9023 | 540 x 300 x 60 |
| YMM-8100 | 380 x 190 x 85 |
| YMM-9120 | 280 x 120 x 85 |
| YMM-9012 | 480 x 200 x 50 |

Deep drawn wire mesh trays with stacking rim and electrolytically polished trays are equipped with collapsible grips

Mesh Type : woven
 Mesh Size: 1 x 1 mm
 Mesh Wire: 0.4mm(27-swg)
 Material: 304(ASTM) Type



Super Fine Mesh Trays

Special Protection Metal Strip



| Model | Dimension(mm) |
|----------|---------------|
| YSF-5500 | 40 x 40 x 20 |
| YSF-5600 | 80 x 40 x 20 |
| YSF-5906 | 80 x 40 x 40 |



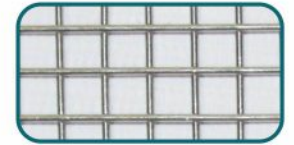
| Model | Dimension(mm) |
|----------|---------------|
| YSF-5650 | 160 x 40 x 20 |
| YSF-5655 | 200 x 40 x 40 |
| YSF-5656 | 200 x 60 x 40 |



| Model | Dimension(mm) |
|----------|---------------|
| YSF-5700 | 70 x 70 x 30 |
| YSF-5800 | 80 x 80 x 40 |
| YSF-5900 | 90 x 90 x 50 |
| YSF-8080 | Ø 80 x 80 |
| YSF-8012 | Ø 80 x 120 |



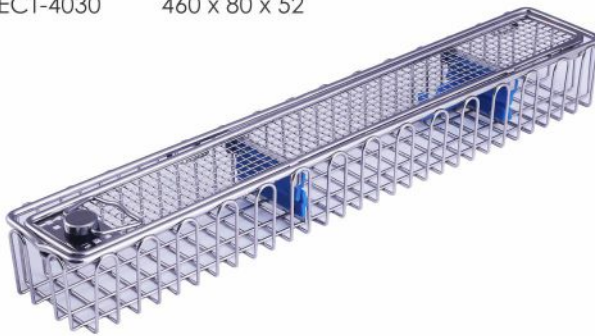
| Model | Dimension(mm) |
|----------|-----------------|
| YSF-6010 | 150 x 110 x 20 |
| YSF-6020 | 180 x 130 x 120 |
| YSF-6035 | 230 x 150 x 50 |



EndoScopic Baskets



| Model | Dimension(mm) |
|----------|---------------|
| ECT-4010 | 290 x 80 x 52 |
| ECT-4030 | 460 x 80 x 52 |



| Model | Dimension(mm) |
|----------|---------------|
| ECT-4060 | 670 x 80 x 52 |
| ECT-4070 | 700 x 80 x 52 |

| Model | Dimension(mm) |
|----------|----------------|
| ECT-4020 | 290 x 160 x 52 |
| ECT-4120 | 310 x 150 x 77 |
| ECT-4040 | 460 x 160 x 77 |
| ECT-4050 | 640 x 150 x 77 |
| ECT-4080 | 660 x 150 x 77 |
| ECT-4110 | 460 x 160 x 52 |
| ECT-4130 | 580 x 160 x 52 |



Transportation Baskets



| Model | Dimension(mm) |
|----------|-----------------|
| YTT-6518 | 650 x 178 x 135 |
| YTT-5718 | 570 x 178 x 135 |



| Model | Dimension(mm) |
|----------|-------------------|
| YTT-4733 | 470 x 330 x 70/82 |
| YTT-4725 | 470 x 250 x 70/82 |
| YTT-5330 | 530 x 300 x 70/82 |



Instruments Plus
with adjustable driver & Detachable



05 plus instruments
SCT-2205 202 x 130 x 30



10 plus instruments
SCT-2210 202 x 195 x 30



15 plus instruments
SCT-2215 280 x 202 x 30



16 plus instruments
SCT-2216 280 x 202 x 30



14 plus instruments
SCT-2216 370 x 202 x 30
4 Elevator + 10 instruments fittings

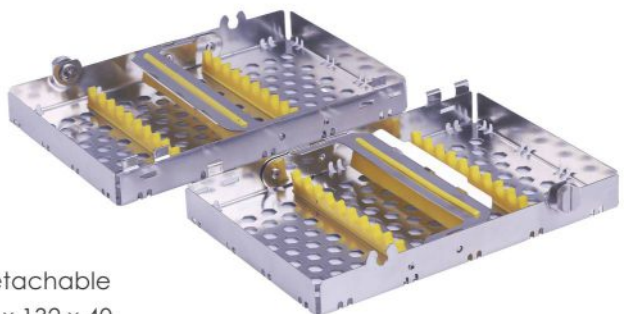
Twin Cassette



10 instruments Detachable
SCT-1910 200 x 82 x 40



20 instruments Detachable
SCT-1920 200 x 132 x 40

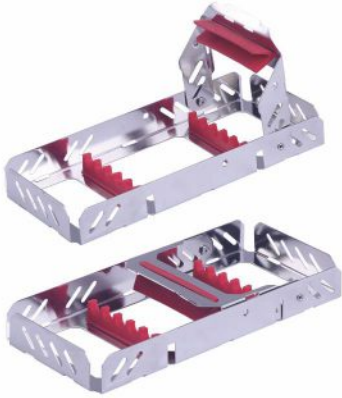


Also available with Hinges

Cassette Trays



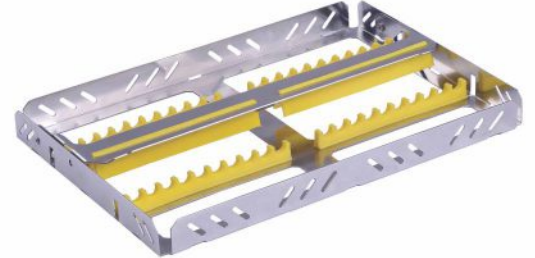
Bracket Lock



05 - Instruments
SCT-1505 180 x 82 x 23



10 - Instruments
SCT-1510 180 x 135 x 23

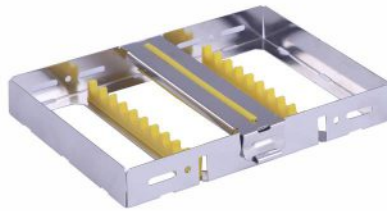


20 - Instruments
SCT-1520 265 x 180 x 23

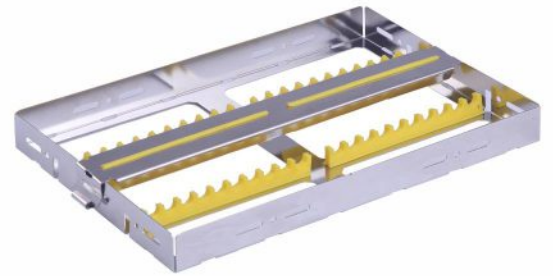
Strip Lock



05 - Instruments
SHC-1005 178 x 78 x 22



10 - Instruments
SHC-1010 178 x 130 x 22



20 - Instruments
SHC-1020 260 x 178 x 22



05 - Inst. SJC-1005 178 x 78 x 22
10 - Inst. SJC-1010 178 x 130 x 22
20 - Inst. SJC-1020 260 x 178 x 22



05 - Inst. SKC-1005 178 x 78 x 22
10 - Inst. SKC-1010 178 x 130 x 22
20 - Inst. SKC-1020 260 x 178 x 22



05 - Inst. SAC-1005 178 x 78 x 22
10 - Inst. SAC-1010 178 x 130 x 22
20 - Inst. SAC-1020 260 x 178 x 22



Cassette Trays



Strip Lock Round bottom



05 - Instruments
SCT-2105 185 x 90 x 23



10 - Instruments
SCT-2110 185 x 145 x 23



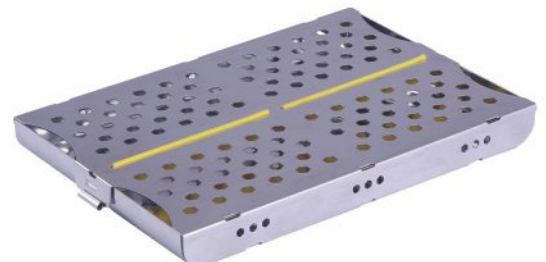
20 - Instruments
SCT-2120 265 x 185 x 23



05 - Instruments
SLT-2105 185 x 90 x 25



10 - Instruments
SLT-2110 185 x 145 x 25

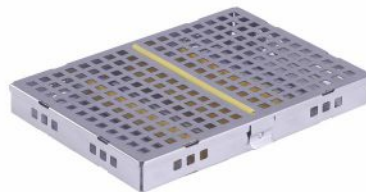


20 - Instruments
SLT-2120 265 x 185 x 25

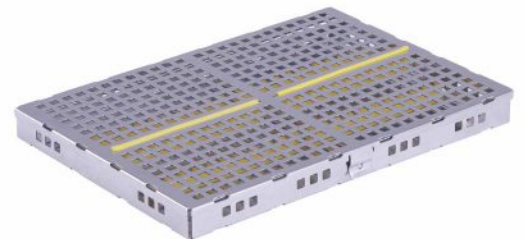
Square



05 - Instruments
SCT-1205 180 x 70 x 22

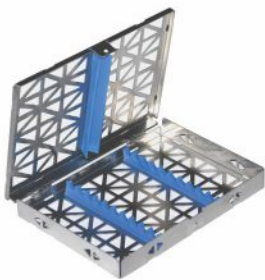


10 - Instruments
SCT-1210 180 x 130 x 22

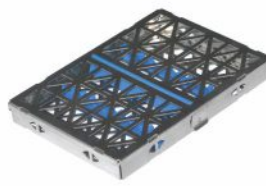


20 - Instruments
SCT-2120 260 x 180 x 22

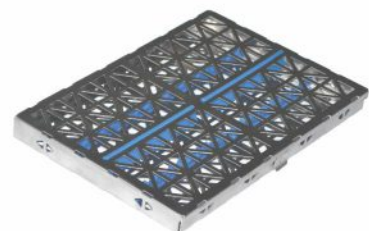
UnionJack



05 - Instruments
SCT-1805 185 x 70 x 22



10 - Instruments
SCT-1810 185 x 130 x 22



20 - Instruments
SCT-1820 260 x 185 x 22



Elongated



05 - Instruments
SCT-2305 190 x 76 x 30



07 - Instruments
SCT-2307 190 x 102 x 30



08 - Instruments
SCT-2308 190 x 115 x 30



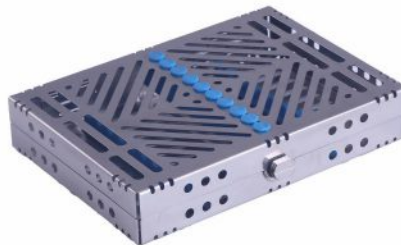
10 - Instruments
SCT-2310 190 x 142 x 30



20 - Instruments
SCT-2320 270 x 190 x 30



05 - Instruments
SCT-1605 200 x 80 x 35



10 - Instruments
SCT-1610 200 x 145 x 35



15 - Instruments
SCT-1615 200 x 208 x 35



Suitable for Elevator



20 - Instruments
SCT-1620 280 x 200 x 35

Cassette Trays



Elongated



05 - Instruments
SCT-2005 182 x 78 x 32



10 - Instruments
SCT-2010 182 x 142 x 32



20 - Instruments
SCT-2020 270 x 182 x 32



03 - Instruments
SCT-1403 180 x 55 x 22



05 - Instruments
SCT-1405 180 x 70 x 22



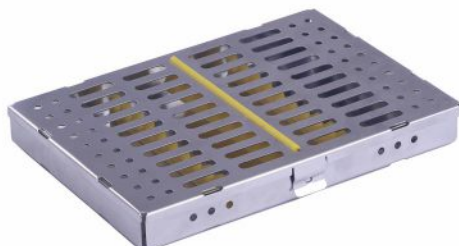
07 - Instruments
SCT-1407 180 x 90 x 22



10 - Instruments
SCT-1410 180 x 130 x 22



20 - Instruments
SCT-1420 260 x 180 x 22



| | | |
|------------------|----------|----------------|
| 05 - Instruments | SYT-1405 | 182 x 70 x 22 |
| 07 - Instruments | SYT-1407 | 182 x 90 x 22 |
| 10 - Instruments | SYT-1410 | 182 x 130 x 22 |
| 20 - Instruments | SYT-1420 | 260 x 130 x 22 |

Cassette Trays



Mesh Cassette



05 - Instruments
SCT-2505 190 x 76 x 28



07 - Instruments
SCT-2507 190 x 102 x 28



10 - Instruments
SCT-2510 190 x 142 x 28



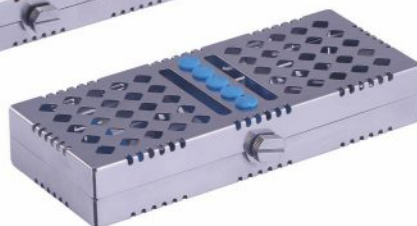
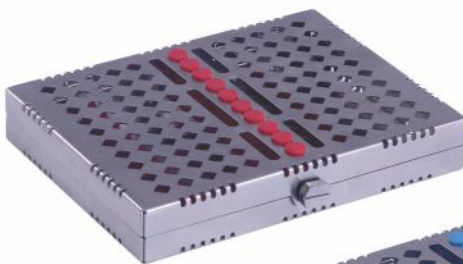
20 - Instruments
SCT-2520 270 x 190 x 28



05 - Inst. SZT-2605 195 x 76 x 24
08 - Inst. SZT-2608 195 x 105 x 24
10 - Inst. SZT-2610 195 x 136 x 24



05 - Inst. SYT-2605 198 x 76 x 24
08 - Inst. SYT-2608 198 x 105 x 24
10 - Inst. SYT-2610 198 x 136 x 24



05 - Inst. SYT-2705 182 x 78 x 30
10 - Inst. SYT-2710 182 x 140 x 30
20 - Inst. SYT-2720 270 x 182 x 30

Cassette Trays



Needle Sterilization box
SYB-2901 150 x 90 x 14



Bur Holders/Endo Box



SBH-1006 06 - Pcs
SBH-1008 08 - Pcs
SBH-1012 12 - Pcs
SBH-1016 16 - Pcs



SEB-1009 1+8 Fittings

SIB-1010
100 x 80 x 45

SIB-1012
150 x 92 x 52

Implant & Surgical box

Dental Photography Mirrors



Orthodontic SS Dental Mirror
Set of 07 pcs.


Instruments Tray

| <u>Model</u> | <u>Dimension</u> |
|--------------|-------------------|
| HIT-8601 | 8" x 6" x 1-1/2" |
| HIT-1061 | 10" x 6" x 1-1/2" |
| HIT-1282 | 12" x 8" x 2" |
| HIT-1410 | 14" x 10" x 2" |
| HIT-1610 | 16" x 10" x 3" |

available with LID & Perforation


Instruments Boxes

| <u>Model</u> | <u>Dimension</u> |
|--------------|-------------------|
| HIB-8601 | 8" x 6" x 1-1/2" |
| HIB-1061 | 10" x 6" x 1-1/2" |
| HIB-1282 | 12" x 8" x 2" |
| HIB-1410 | 14" x 10" x 2" |
| HIB-1610 | 16" x 10" x 3" |

available with LID, Perforation and Filter


Kidney Dish

| <u>Model</u> | <u>Dimension</u> |
|--------------|-------------------|
| HKD- 1006 | Kidney Dish - 6" |
| HKD- 1008 | Kidney Dish - 8" |
| HKD- 1010 | Kidney Dish - 10" |
| HKD- 1012 | Kidney Dish - 12" |

available with Lid


Gallipot

| <u>Model</u> | <u>Dimension</u> |
|--------------|------------------|
| HGP-2002 | 2 oz (50ml) |
| HGP-2004 | 4 oz (100ml) |
| HGP-2006 | 6 oz (150ml) |
| HGP-2008 | 8 oz (200ml) |



Dressing Container

| Model | Dimension |
|----------|-------------|
| HDC-1056 | 5" x 6-1/2" |
| HDC-1055 | 5" x 5" |
| HDC-1045 | 4" x 5" |

Forceps Jar



| Model | Dimension |
|----------|-----------|
| HFJ-1025 | 2" x 5" |
| HFJ-1028 | 2" x 8" |

Female Urinal



HMU-1280 750ml

Male Urinal



HFU-1280 750ml

Lotion Bowl



| Model | Dimension |
|----------|-------------------|
| HLB-1205 | 205mm / 2 Ltr. |
| HLB-1150 | 150mm / 0.75 Ltr. |
| HLB-1125 | 125mm / 0.4 Ltr. |

Vomit Bowl



HVB-1505 150 x 50mm

Scaler Tray



HST-1901 190 x 100

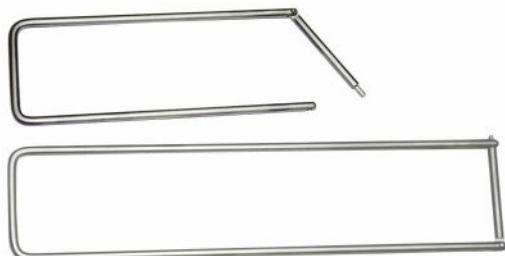
Sterilizing/Dressing Drum



| Model | Ø | H |
|----------|-----------|---|
| HSD-1510 | 150 x 100 | |
| HSD-1515 | 150 x 150 | |
| HSD-1919 | 190 x 190 | |
| HSD-1924 | 190 x 240 | |
| HSD-2419 | 240 x 190 | |
| HSD-2424 | 240 x 240 | |
| HSD-2439 | 240 x 390 | |
| HSD-2434 | 240 x 340 | |
| HSD-2915 | 290 x 150 | |



Instruments Stringer



| Model | Dimension |
|----------|--------------|
| YIS-1004 | 4" x 2-1/2" |
| YIS-1006 | 6" x 2-1/2" |
| YIS-1008 | 8" x 2-1/2" |
| YIS-1010 | 10" x 2-1/2" |

Identification Tags



TAG-5030 SS Tag 50 x 30



TAG-9030 SS Tag 90 x 30



Adjustable Instruments fixation Rack
230 x 220 x 40

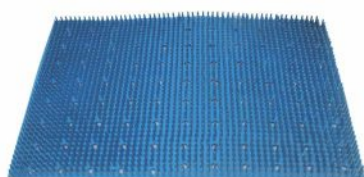


Clip for cassettes

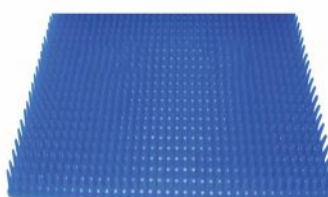


Price € : on demand

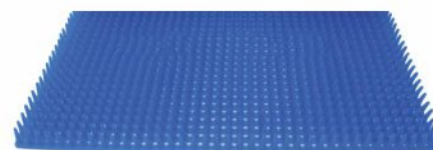
Silicon Mats



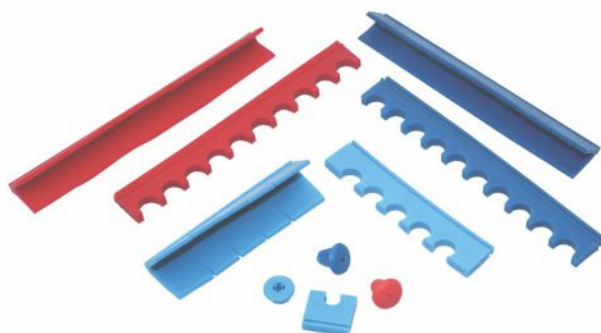
515 x 240 x 15mm



515 x 240 x 15mm,



545 x 565 x 19mm,



Silicon fittings for cassettes available in colors.....

- Red
- Blue
- Yellow
- Green
- Gray
- Black

Sterilization Trays Company

- ▶ Unity as a motivated team to meet our quality objects through earning international certifications.
- ▶ Adequate training of our staff so as to constantly acquire and upgrade knowledge base.
- ▶ Continuous improvement of QMS.
- ▶ Improving & expanding production facilities.
- ▶ Establish all the production facilities under single owned premises
- ▶ Consultancy from global expert for manufacturing, Quality and business norms.



Laser Marking



Laser Welding



Laser Cutting



Laser Cutting



STERITRAYS



Suite 12, Bunkilla Plaza,
Bracetown Business Park,
Clonee, Dudlin 15,
D15XC64, Republic of Ireland.

Tel: + 353 1 806 8600
Direct: + 353 1 834 4340
Email: info@tpwhelehan.ie
Web: www.whelehansurgical.ie

For Ordering, please contact:

Uniphar Hospital Services,
4045 Kingswood Road,
Citywest Business Park, Dublin 24.
E-Mail: Unipharhospitalservices@uniphar.ie

Tel: + 353 1 468 8456
Fax: + 353 1 466 0782

